

# Ultra-Micro Type Reed Switches RD-7X Series

## Outline

World's smallest class, High quality reed switch.  
 Ultra-micro reed switch hermetically sealed in a gas-filled glass envelope.  
 This product is the result of "innovation promotion program" of NEDO.

## Features

The glass tube with a small diameter suitable for small coil.  
 It suitable for the ultra small relay, or it combines with a magnet and is on a small proximity switch.  
 The low contact resistance for general-purpose.

## Applications

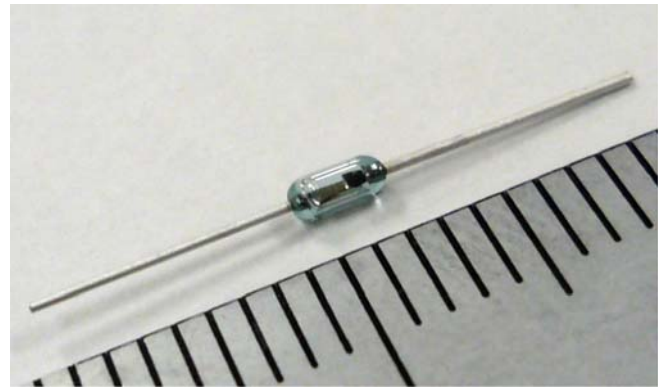
When used in combination with magnet, the reed switch finds extensive applications in which it provides switching and sensing capabilities.  
 OA electronics, Proximity sensors, Medical applications, and general-purpose.

## Specifications

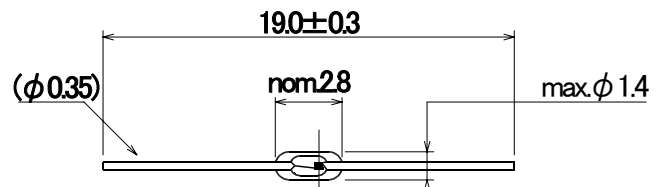
Items		Performance
Contact Form	—	1 Form A
Maximum Switching Power	(W)	2
Maximum Switching Current	(A)	0.2
Maximum Switching Voltage	(V.DC)	30
Withstand Voltage	(V.DC)	100
Operating Time	(ms)max.	0.5
Release Time	(ms)max.	0.05
Bounce Time	(ms)max.	0.5
Operating Temperature Range	(°C)	-40~+125
Contact Resistance	(mΩ)max.	200
Life Expectancy (5VDC,10mA, and Resistive)	—	$1 \times 10^7$

\*Pick Up ampere-turn : 5~20(A)

Note) This product is under development, all figures are provisional.



## Shapes and Dimensions



## NIPPON ALEPH CORPORATION®

The names of the products and the specifications in this catalog are subject to change without notice for the sake of improvement. The manufacturer also reserves the right to discontinue any of these products. At the time of delivery, please ask for specifications sheets to check the contents before use.

Descriptions in this catalog regarding product characteristics and quality are based solely on discrete components. When using these components, be sure to check the specifications with the component in question mounted on the products.

The manufacturer's warranty will not cover any disadvantage or damage caused by improper use of the products that deviates from the characteristics, specifications, or conditions for use described in the catalog. The products in this catalog are intended for use in ordinary electronic products. If any of these products are to be used in special applications requiring extremely high reliability, where product defects might pose a safety risk, please consult your NIPPON-ALEPH sales representatives.

Please be advised that the manufacturer accepts no responsibility for any infringement by users of the manufacturer's products on third party patents or industrial copyrights. The manufacturer is responsible only when such infringements are attributable to the product and its manufacturing process.



### Precautions

#### Export Control

For customers outside Japan

NIPPON-ALEPH products should not be used or sold for use in the development, production, stockpiling or utilization of any conventional weapons or mass-destructive weapons (nuclear weapons, chemical or biological weapons, or missiles), or any other weapons.

For customers in Japan

For Products which are controlled items subject to the 'Foreign Exchange and Foreign Trade Law' of Japan, the export license specified by the law is required for export.

This catalog as of August 2015.

### CONTACT US

NIPPON ALEPH CORPORATION Marketing Division

Masonic 39T Bldg 8F 2-4-5, Azabudai, Minato-ku, Tokyo 106-0041 Japan

e-mail: info@po.nippon-aleph.co.jp URL: http://www.nippon-aleph.co.jp

TEL: 81-3-5773-2101

FAX: 81-3-5773-2106

ALEPH America Corporation: 4700 Aircenter Circle, Reno, Nevada 89502 USA

Phone: (775) 827-8000 Fax: (775) 827-8044 Email: info@aleph-usa.com Web: www.aleph-usa.com

Aleph The Netherlands Corporation B.V. Gustav Mahlerlaan 427, 1082MK, Amsterdam, The Netherlands. TEL: 31-0-207779520

HONG KONG ALEPH CO., LTD.

South East Industrial Building 24/F Flat(E), No.611-619 Castle Peak Road Tsuen Wan, N.T. H.K.

TEL: 852-2411-0318

FAX: 852-2411-4035